

LOXAHATCHEE CLUB AT MAPLEWOOD PLAT NO. 25 OF PHASE II - REPLAT

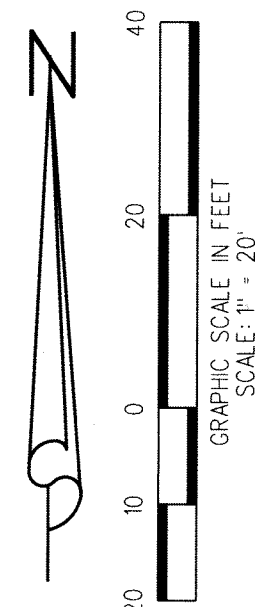
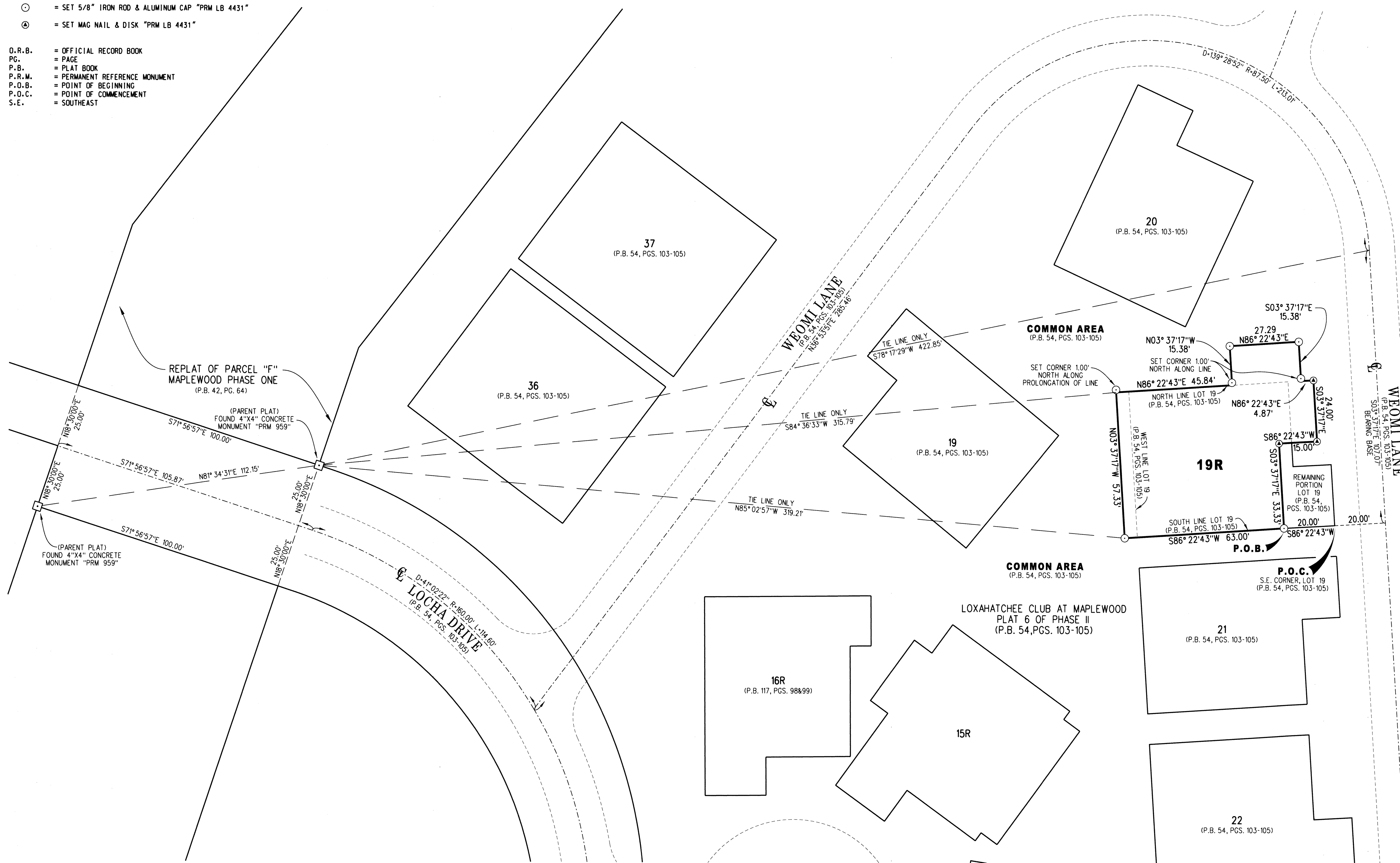
BEING A REPLAT OF A PORTION OF LOT 19 AND A PORTION OF THE COMMON AREA AS SHOWN
ON THE PLAT OF THE LOXAHATCHEE CLUB AT MAPLEWOOD PLAT NO. 6 OF PHASE II, AS RECORDED
IN PLAT BOOK 54, PAGES 103 THROUGH 105, PUBLIC RECORDS OF PALM BEACH COUNTY, FLORIDA,
LYING IN SECTION 11, TOWNSHIP 41 SOUTH, RANGE 42 EAST, TOWN OF JUPITER, PALM BEACH COUNTY, FLORIDA

FEBRUARY 2017 SHEET 2 OF 2

0141

LEGEND / ABBREVIATIONS

- ⊙ = SET 5/8" IRON ROD & ALUMINUM CAP "PRM LB 4431"
- ⊙ = SET MAG NAIL & DISK "PRM LB 4431"
- D.R.B. = OFFICIAL RECORD BOOK
- PG. = PAGE
- P.B. = PLAT BOOK
- P.R.M. = PERMANENT REFERENCE MONUMENT
- P.O.B. = POINT OF BEGINNING
- P.O.C. = POINT OF COMMENCEMENT
- S.E. = SOUTHEAST



		CAD. K:\UST \ 114142 \ 54-103 \ 11-053A-306 \ 11-053A-306.DGN	
		REF.	
F.L.D.	FB.	PG.	JOB 11-053A-306
OFF. R.J.W.			DATE 11/09/2016
CKD. D.C.L.	SHEET 2	OF 2	DWG. D11-053P

LB4431 675 West Indiantown Road, Suite 200, Jupiter, Florida 33458 TEL. 561-746-8454